



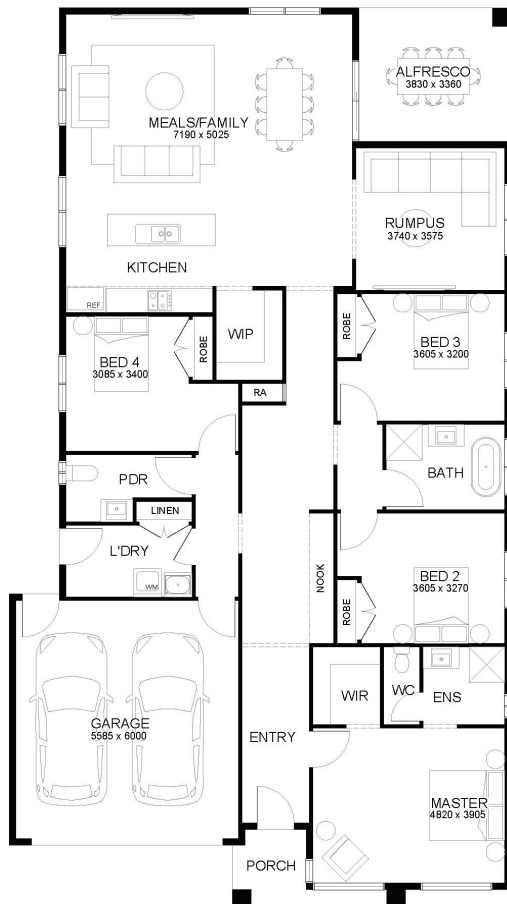
SUITS 14.0M+ BLOCK

HOUSE & LAND PACKAGE

\$599,698*

Lot 109 Winterfield, WINTER VALLEY

4 2 2 2

**SANSA 257****Winterfield.**

LOT SIZE 447.02 sqm

HOUSE AREA 256.96 sqm

Inclusions

- Site Costs Allowance Including Rock Removal
- 7 Star energy Rated Homes
- Double-glazed awning windows and sliding doors (where required)
- Council & Developer Requirements
- Bushfire Measures To Meet BAL 12.5
- Colorbond Roof
- Floor Coverings Throughout
- Colour-on concrete driveway (up to 36m2)
- Letterbox
- 3.5kw Split System To Living Area
- 2590mm Ceilings To Single Storey & Ground Floor In Double Storey Homes
- Block Out Roller Blinds Throughout
- Dishwasher

**For more information contact
Daniel New on 0482 052 817**

*Fixed Price Current As Of 27/09/2024. Fixed Pricing Is Based On Developer Engineering Plans, Estate Guidelines And Plan Of Subdivision. Land Availability And Pricing Supplied By The Developer Are Subject To Change Without Notice. All House And Land Packages Are Subject To Developer Approval. Price Does Not Include Any Stamp Duty, Government, Legal Or Bank Charges. *Total Package Price Minus \$10K FHOG (Subject To SRO Eligibility) The First Home Owners Grant Is A Government Incentive And Any Claims Will Be Lodged Externally. Photographs In This Flyer May Depict Fixtures, Finishes And Features Either Not Supplied Or Are Upgrade Options By Sherridon. All Floorplan, Facade Images And Photographs Have Been Used For Illustrative Purposes Only (Refer To Contract Documentation For Full Details) And May Not Represent The Final Product As Shown. Please Refer To Your Friendly New Home Consultant For An Exact List Of Inclusions With Detail. Sherridon Homes Reserves The Right To Amend Specification And Price Without Notice. VIC Builder's Licence: CDB-U 50039v

Call **1300 188 668** or visit **sherridonhomes.com.au**

Sherridon Pty Ltd | 56 Barclay Road, Derrimut, Victoria 3026 | P +61 3 8390 5000 | E info@sherridonhomes.com.au | Registered Building Practitioner CDB-U50039