



Price excludes upgrade items above standard specification such as feature render and bricks, front entrance timber decking, front entry door, brick infills above garage, external lighting, fencing, concrete paths and driveway. Façade Image may also contain items not supplied by Metricon Homes, namely landscaping and planter boxes.

FIXED PRICE*

\$544,430

Price fixed based on Titled Date of 30/06/2024

Winterfield

Lot 117 Sunpeaks Street, Winter Valley

CALLULA 17

TRADITIONAL FACADE

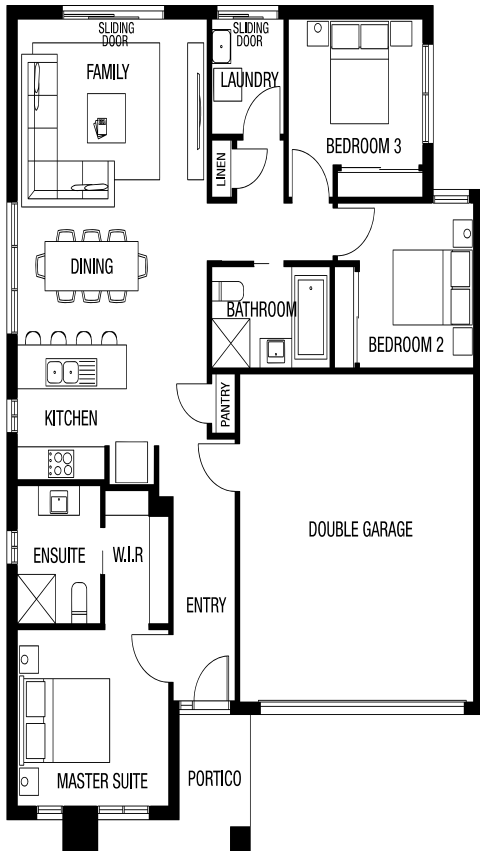
BLOCK SIZE: 374m2



FIXED PRICE PACKAGE INCLUDES:

The Callula 17 with Traditional facade built to our industry leading base specifications, plus:

- 7 star energy rating
- Fixed site costs (no more to pay)
- Timber look laminate flooring to main living area, meals, kitchen and entry
- Carpet to bedrooms
- Quality tiles to bathrooms, ensuite and laundry
- Stylish stainless steel appliances
- Garage door remote control
- Aluminium double glazed windows
- Ducted gas heating
- Lifetime Structural Guarantee#



Easy & Affordable.

1300 METRICON
www.metricon.com.au

To find out more, contact
Emily Hill on 0478 679 336

BUILD WITH CONFIDENCE



homesolution | m metricon