



SUITS 14.0M+ BLOCK

HOUSE & LAND PACKAGE

**\$771,698\***

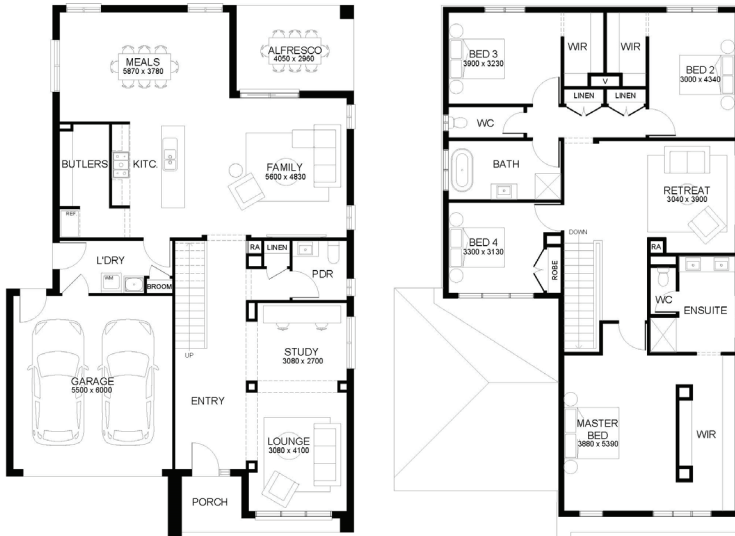
Lot 1361 Winterfield, WINTER VALLEY

4 2 3 2

**MELROSE 342**

Winterfield.

LOT SIZE 480 sqm  
HOUSE AREA 341.95 sqm



**Inclusions**

- Site Costs Including Rock Removal
- Council & Developer Requirements
- Bushfire Measures To Meet BAL 12.5
- Colorbond Roof
- Floor Coverings Throughout
- Brick Infills Above Windows and Doors
- 2590mm Ceilings To Single Storey & Ground Floor In Double Storey Homes
- 40mm Stone Benchtops To Kitchen & 20mm To Bathroom & Ensuite
- 900mm Appliances, Dishwasher & Microwave With Trim Kit
- LED Lights Throughout
- Blinds Throughout
- Evaporative Cooling

**For more information contact  
Daniel New on 0482 052 817**

\*Fixed Price Current As Of 11/05/2024. Fixed Pricing Is Based On Developer Engineering Plans, Estate Guidelines And Plan Of Subdivision. Land Availability And Pricing Supplied By The Developer Are Subject To Change Without Notice. All House And Land Packages Are Subject To Developer Approval. Price Does Not Include Any Stamp Duty, Government, Legal Or Bank Charges. \*Total Package Price Minus \$10K FHOG (Subject To SRO Eligibility) The First Home Owners Grant Is A Government Incentive And Any Claims Will Be Lodged Externally. Photographs In This Flyer May Depict Fixtures, Finishes And Features Either Not Supplied Or Are Upgrade Options By Sherridon. All Floorplan, Facade Images And Photographs Have Been Used For Illustrative Purposes Only (Refer To Contract Documentation For Full Details) And May Not Represent The Final Product As Shown. Please Refer To Your Friendly New Home Consultant For An Exact List Of Inclusions With Detail. Sherridon Homes Reserves The Right To Amend Specification And Price Without Notice. VIC Builder's Licence: CDB-U 50039v