

# Winterfield.

Front Garden Packages



# Creating beautiful neighbourhoods

Winterfield was founded upon a clear and distinct vision. To uphold that vision, we have guidelines in place to ensure the enduring quality of the community, foster the unique lifestyle and protect the overall Winterfield aesthetic.

To add that special touch to your home at Winterfield, every purchaser receives free front landscaping\*. With a focus on local plants that harmonise with the overall surroundings, there are 4 package options available for you to choose from.

# Choosing your front landscaping package

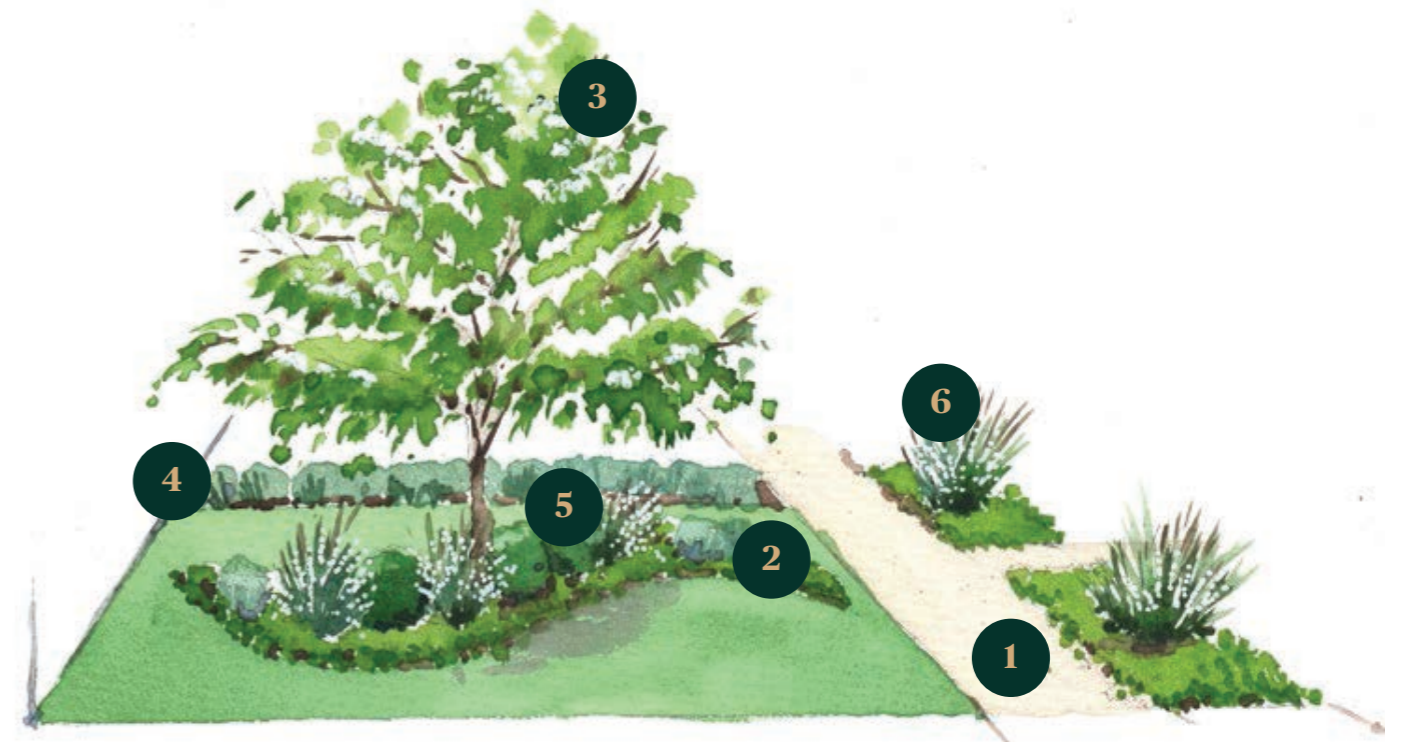
Once you've received your COO (Certificate of Occupancy) and all builder materials have been removed from site, please follow these two easy steps to coordinate the installation of your designer front garden.

- 1.** Contact your client representative from Fleming's to arrange your consultation: 03 9756 6105 or email: [winterfieldlandscapes@flemings.com.au](mailto:winterfieldlandscapes@flemings.com.au) to arrange your consultation.
- 2.** Your Fleming's client representative will contact you to discuss your design preference, alteration for site position and to coordinate the installation of your selected gardens. Fleming's will then take care of all the necessary processes required to finalise the design, build and planting of your designer front garden.



# June Snow

June Snow presents a tranquil garden setting that will complement any modern, contemporary or traditional new home design. This design includes a unique, central garden bed design with a gorgeous flowering tree as its centrepiece. Beneath the tree, boxwood spheres along with layers of medium shrubs and groundcovers add substance to the underplanting. Designed to ensure the hero of your garden is the variety of plants – the June Snow garden sits elegantly on a square lawn edged by shrubbery and enhanced by natural path materials.



1 Tuscan Topping



2 Dichondra repens 'Dichondra'



3 Cornus controversa  
'June Snow' 'Giant Dogwood'



4 Festuca glauca 'Blue Fescue'



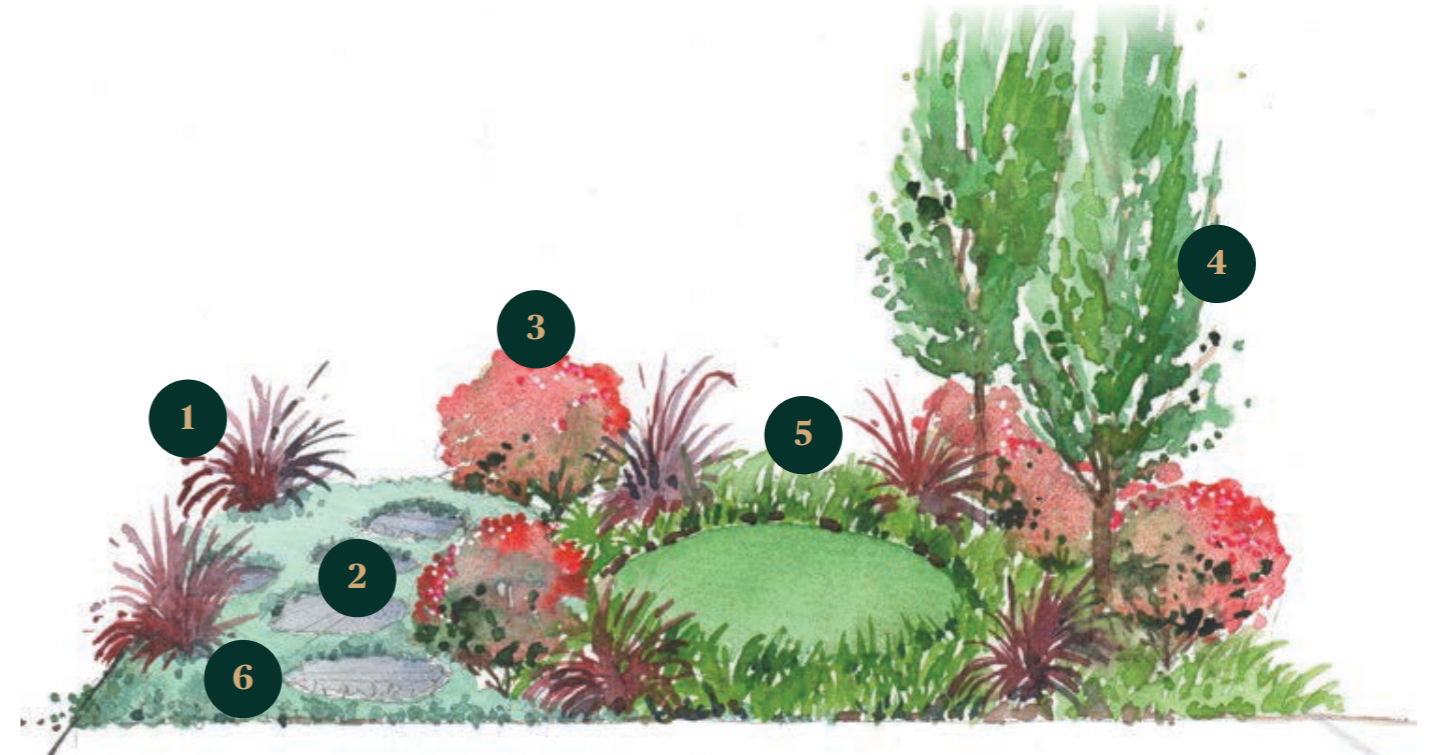
5 Buxus sempervirens ball  
'American Boxwood'



6 Gaura lindheimeri  
'White Gaura'

# Pyrus

The Pyrus garden by Fleming's is lush and rich in appeal. Breaking the stereotype for small urban gardens, Pyrus frees itself of formal lines and symmetry by encouraging a flowing and natural environment. Two ornamental garden trees look over a circular lawn ensconced by a pallet of purple foliated shrubs. To create contrast, delicate white lilies and silver foliage plants surround bluestone pavers that vary in shape.



**1** Phormium tenax  
'Purple New Zealand Flax'



**2** Blue Stone Stepping Stones



**3** Loropetalum chinense rubrum  
'Purple Leaf Fringe Flower'



**4** Pyrus calleryana  
'Capital Callery Pear'



**5** Anthropodium cirratum  
'White Knight' 'Star Lily'



**6** Dichondra argentea  
'Silver Falls Dichondra'

# Lavandula

Beautifully crafted to ensure the garden flourishes no matter the season, there are so many elements in the Lavandula garden design to fall in love with. A crepe myrtle tree is the ideal feature tree – its romantic form and seasonal appeal with stunning summer flowers, gorgeous autumn tones balanced with striking smooth exfoliating bark in the winter will set your heart aflutter. In the springtime, scented plants will make the heart sing and are sure to bring birds and bees aplenty. The diamond lawn centrepiece surrounded by signature white pebbles will dress any home facade to its greatest potential.



1 White Ice Pebbles



2 *Loropetalum chinense rubrum*  
'Purple Leaf Fringe Flower'



3 *Lagerstroemia indica x faurei*  
'Tuscarora Crepe Myrtle'



4 *Lavandula angustifolia*  
'Dwarf English Lavender'



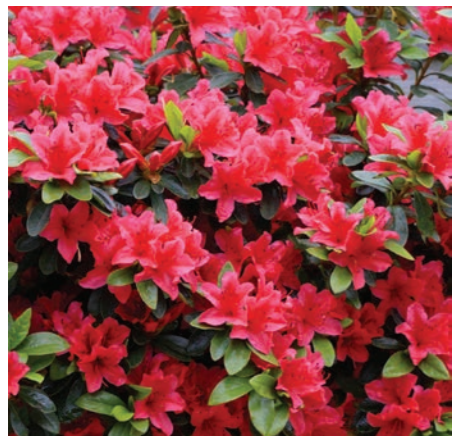
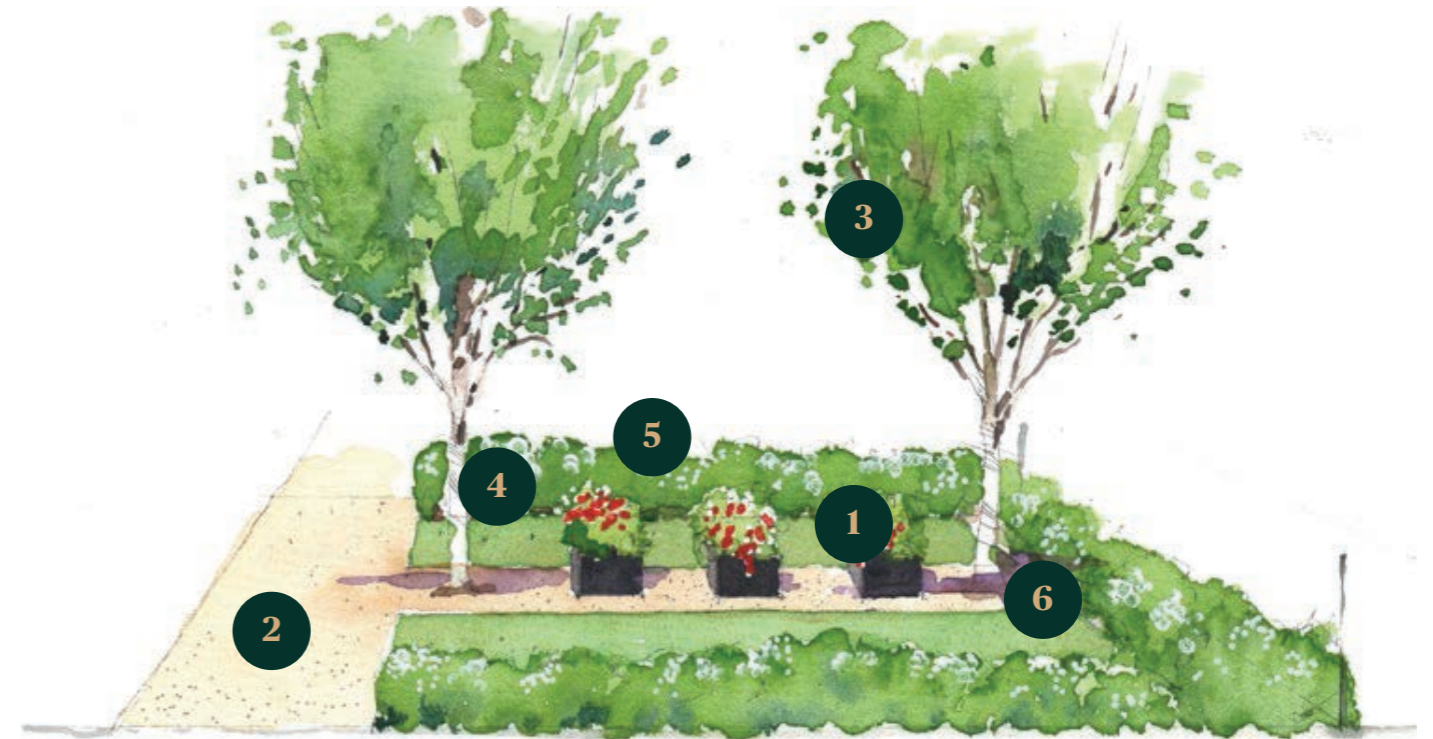
5 *Lavandula dentata*  
'White French Lavender'



6 White Granite Pavers

# Betula

Simple elegance of lines and an innate symmetry are the shining component of the Betula garden design by Fleming's. This stylish, contemporary design has been carefully executed to balance a striking home facade and features a series of three potted Azaleas flanked by two stately yet graceful birch trees. The scene is perfectly ensconced in green with a linear lawn framed by an informal hedge of an aromatic evergreen shrub highlighted by seasonal flowers.



**1** Azalea 'Scarlet Dragon'  
'Red Azalea'



**2** Compacted Granitic Sand



**3** Betula utilis jacquemontii  
'White barked Himalayan Birch'



**4** Garden Mulch



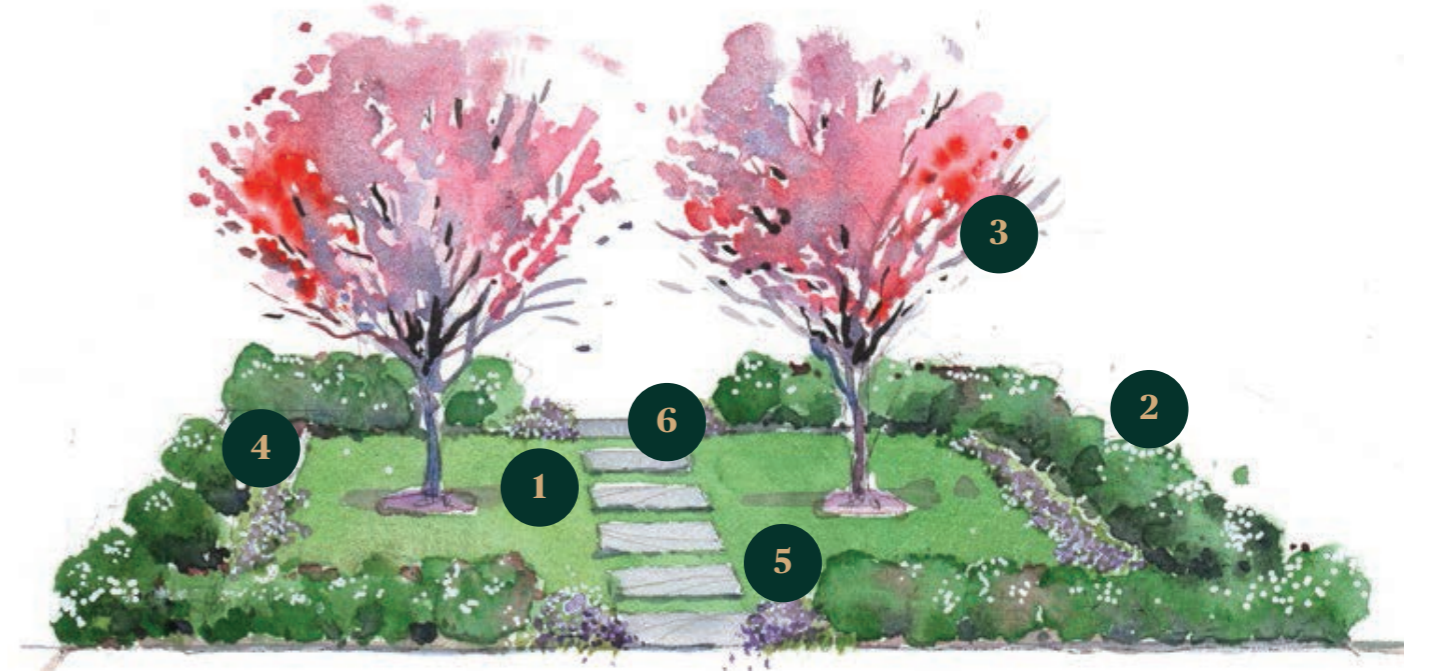
**5** Choisya ternata 'Mexican Orange'



**6** Sir Walter Buffalo Turf

# Abelia

A perfected symmetry is the basis of the Abelia garden with central bluestone pavers leading directly through a mirrored garden. On either side, two feature trees with seasonal flowers will balance a lush lawn enclosed by layered hedging that adds a sense of informal structure to the design. A classic design, the Abelia garden is perfect for those who appreciate low maintenance and have chosen a home with a central entrance.



1 Sir Walter Buffalo Turf



2 Abelia grandiflora Nana 'Dwarf Abelia'



3 Cercis chinensis 'Avondale Chinese Redbud'



4 Garden Mulch



5 Scaevola albida 'Pale Fan Flower'

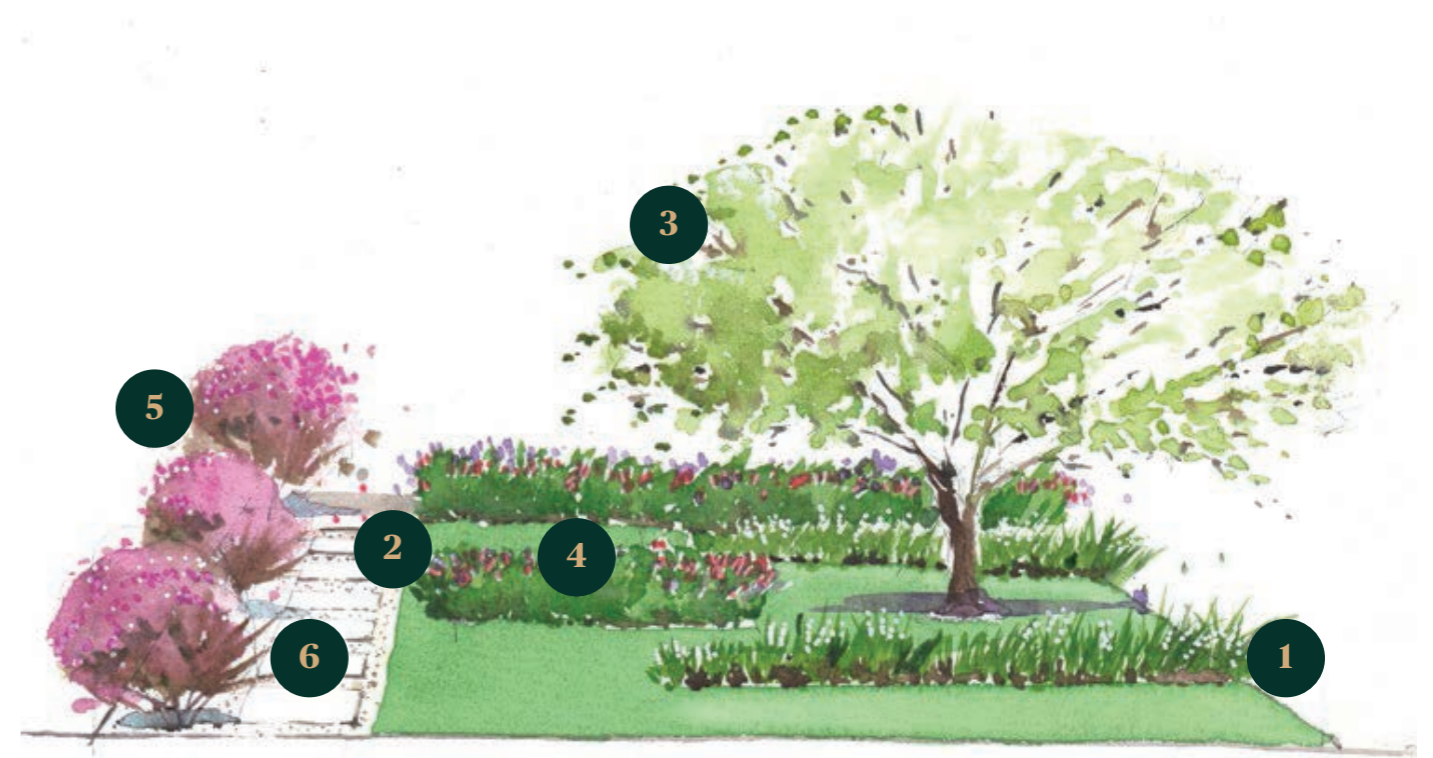


6 Bluestone Pavers



# Wild Iris

The Wild Iris garden by Fleming's is a stately yet contemporary addition to any home. Wild Iris will suit almost any home facade but will be particularly appealing to those that appreciate a modern edge. Horizontal garden beds feature small, but vibrant garden shrubs. Surrounding the feature tree – a beautiful Crab Apple that will offer seasonal interest and beauty when flowering. Offset from centre, white granite pavers will be flanked by purple leaf shrubs for added contrast. With the added elegance of time-honoured plants that can stand the test of time, the Wild Iris is the perfect contemporary garden design.



1 *Dietses grandiflora* 'Wild Iris'



2 White Ice Pebbles



3 *Malus* 'Sutyzam' Sugar Tyme  
'Flowering Crab Apple'



4 *Hebe* 'Sunset Boulevard'  
'Purple Hebe'



5 *Loropetalum chinense rubrum*  
'Purple Leaf Fringe Flower'




6 White Granite Pavers



# Winterfield.

## Get in touch with us

 1300 857 646

 [sales@winterfield.com.au](mailto:sales@winterfield.com.au)

## Visit our Sales Suite

 We're open:

Saturday to Wednesday

11am - 5pm

351 Greenhalghs Rd, Winter Valley

Developed by

**Goldfields**

 **CORE Projects**

**Fleming's**  
LANDSCAPES

Disclaimer: Plans, illustrations and images are depictions for presentation purposes and are indicative only and believed to be correct at the time of printing. Plant species are subject to change and are dependent on seasonal availability. This document should not be relied upon by purchasers, as no warranty or representation is given or to be construed. Areas and dimensions are subject to survey and proposed facilities are subject to regulatory approval and change without notice. This does not form part of any contract and purchasers should review the contract carefully, make their own inquiries and obtain independent advice before proceeding.