

# Winterfield North

Front Garden Packages

# Creating beautiful neighbourhoods

Winterfield was founded upon a clear and distinct vision. To uphold that vision, we have guidelines in place to ensure the enduring quality of the community, foster the unique lifestyle and protect the overall Winterfield aesthetic.

To add that special touch to your home at Winterfield, every purchaser receives free front landscaping\*. With a focus on local plants that harmonise with the overall surroundings, there's 4 package options available for you to choose from.







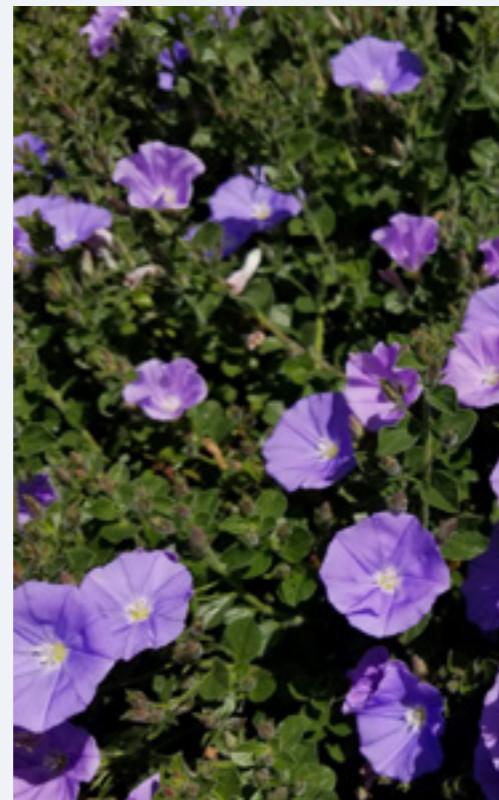
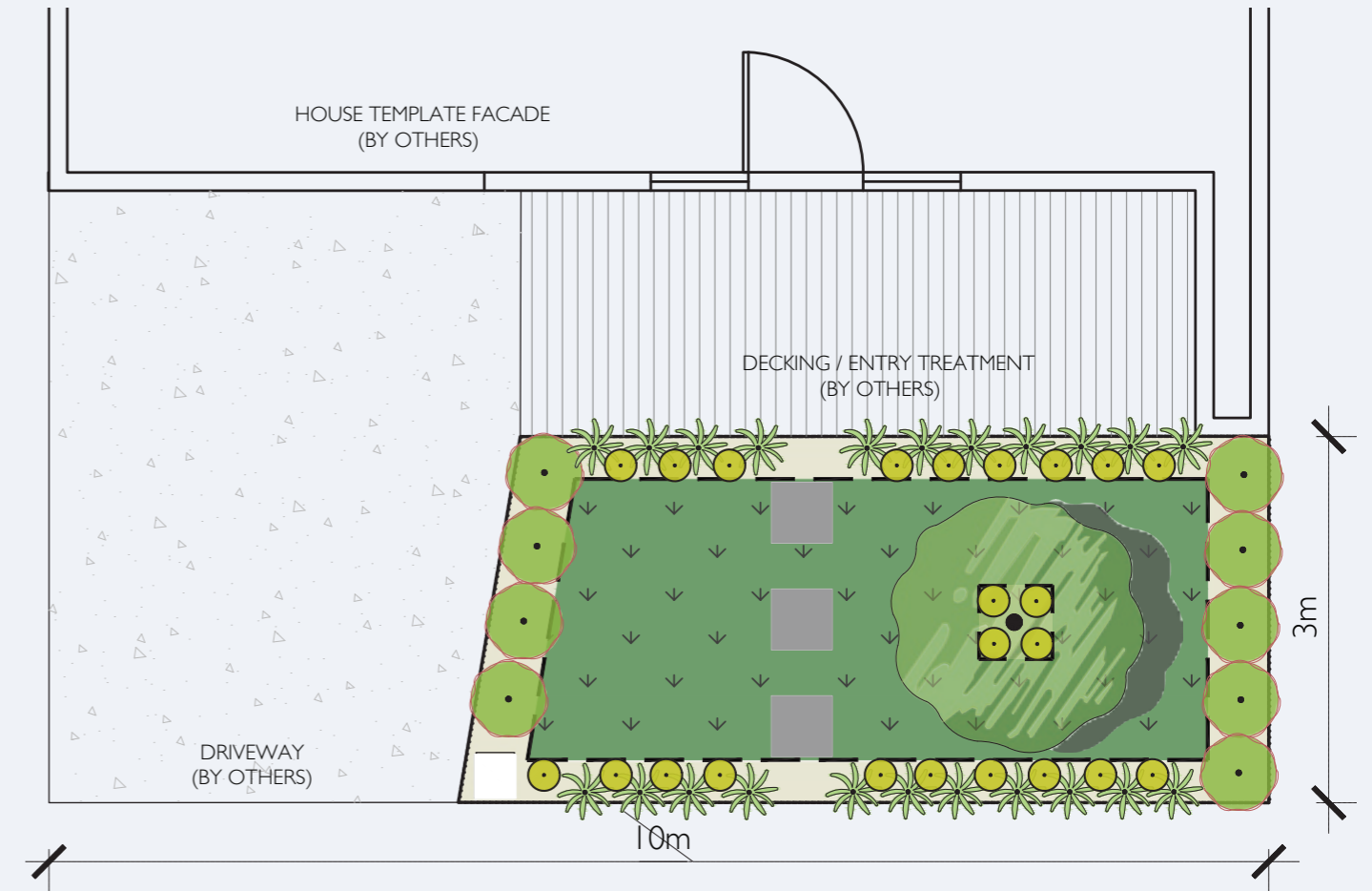
## Choosing your front landscaping package

Once you've received your COO (Certificate of Occupancy) and all builder materials have been removed from site, please follow these two easy steps to coordinate the installation of your designer front garden.

- 1.** Contact your client representative from Fleming's to arrange your consultation: 03 9756 6105 or email: [winterfieldlandscapes@flemings.com.au](mailto:winterfieldlandscapes@flemings.com.au) to arrange your consultation.
- 2.** Your Fleming's client representative will contact you to discuss your design preference, alteration for site position and to co-ordinate the installation of your selected gardens. Fleming's will then take care of all the necessary processes required to finalise the design, build and planting of your designer front garden.

# Thrive Garden

The THRIVE garden features an elegant and classical design set to ensure a lasting impression created to impress for years to come. This garden design will enhance any home façade offering a clean and neat appearance while still easy-to-maintain. The hardy plant pallet includes a super tough tree – the crepe myrtle, which will flourish in summer with a heady show of summer blooms. Shrubbery includes lovely evergreen foliage plants which, combined with the elegance of strappy plants and flowering ground covers – ensures this garden will thrive all year round!



## Plants

- Lagerstroemia fauriei 'Tuscarora'
- Convolvulus mauritanicus
- Arthropodium cirratum
- Distylium Vintage Jade

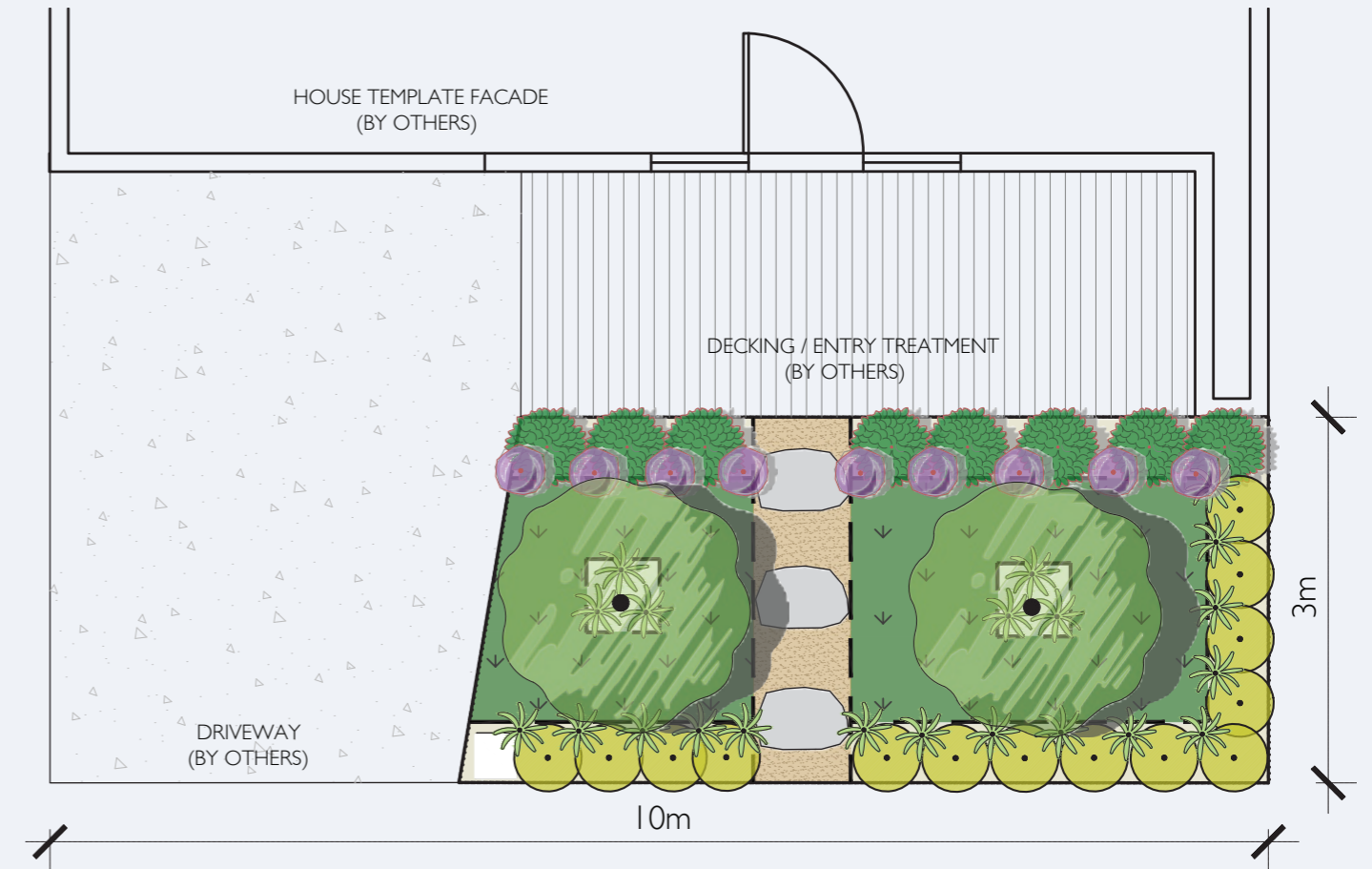
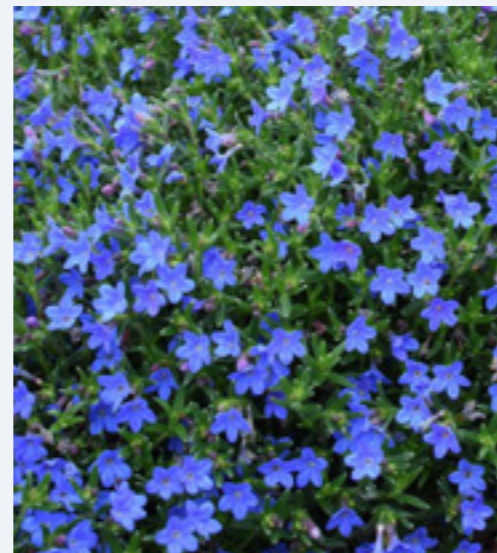
## Symbols

- Instant turf
- Garden Bed Area
- Timber edging
- Bluestone Steppers
- Letter Box Placeholder



# Moon Garden

Balance and symmetry are on grand display within the MOON garden. Packed to the brim with flowering plants including multi-stem trees, shrubs, grasses and ground covers – this garden is perfect for those that like to see their garden glow and flourish. The garden's stylish colour pallet of white, green and purples will adore the balance of evergreen and deciduous plants that will offer something special in any season.



## Plants

- Lagerstroemia indica 'Moonlight Magic'
- Loropetalum plum delight
- Hydrangea quercifolia 'Munckin'
- Liriope muscari
- Lithodora diffusa 'Grace Ward'

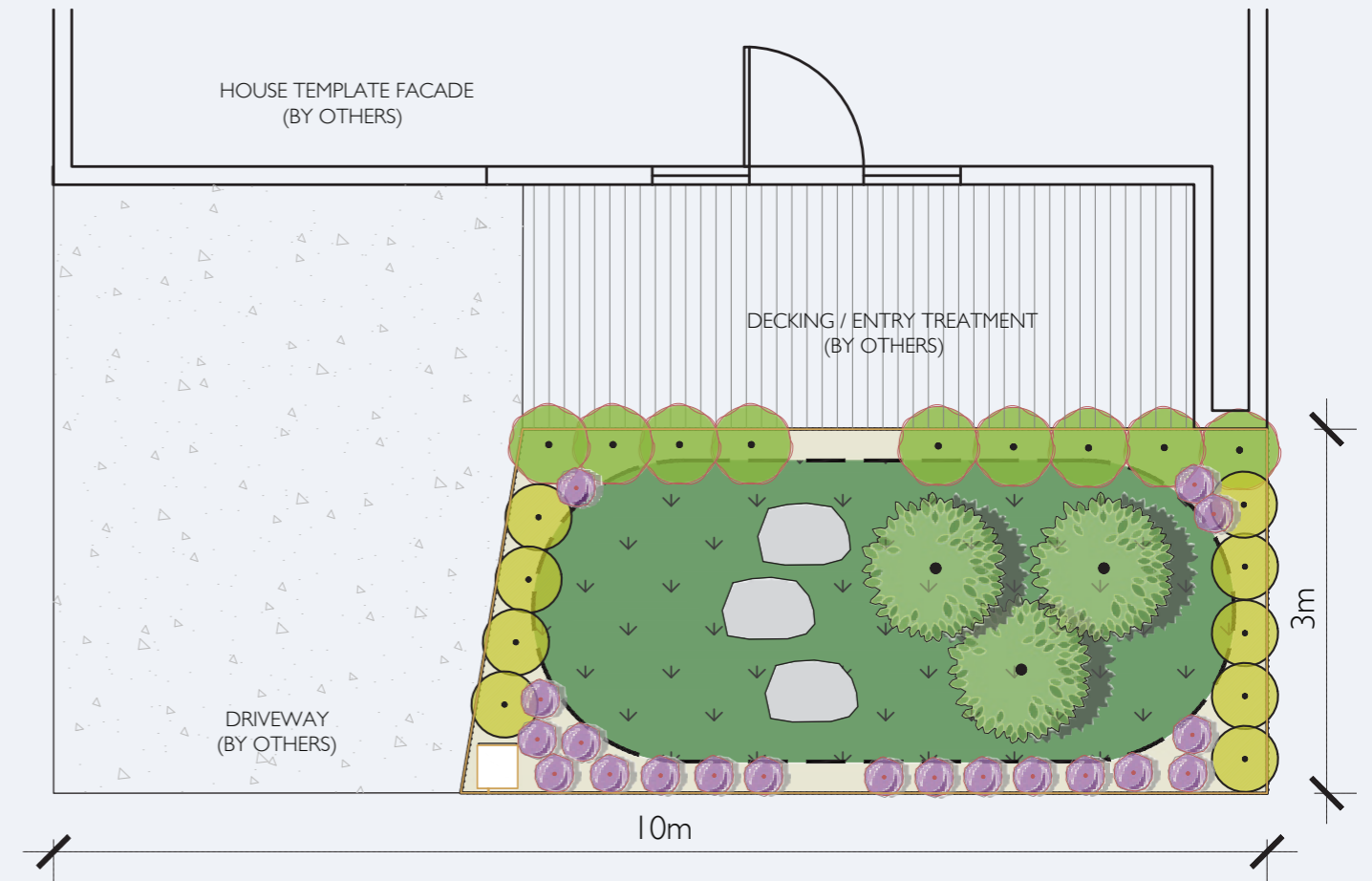
## Symbols

- Instant turf
- Garden Bed Area
- Granitic Sand
- Bluestone Square Paving
- Timber edging



# Oval Garden



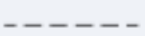

A garden that does away with hard edges – the OVAL garden is all about soft lines and a less formal approach. A central oval of turf will set the scene for a trio of ornamental pears. These are no ordinary Pyrus, they are the most narrow and upright of all the ornamental pears – the 'Javelin' which offers lateral height without taking up too much space. The round steppers will provide a fun pathway to the front door. This design will suit a single or double-storey home and modern or traditional housing designs.



## Plants

-  Pyrus calleryana x pyrifolia 'NCPXI' icon Javelin
-  Buxus Faulkner
-  Pieris japonica 'Debutante'
-  Scaevola aemula 'Fairy Blue'

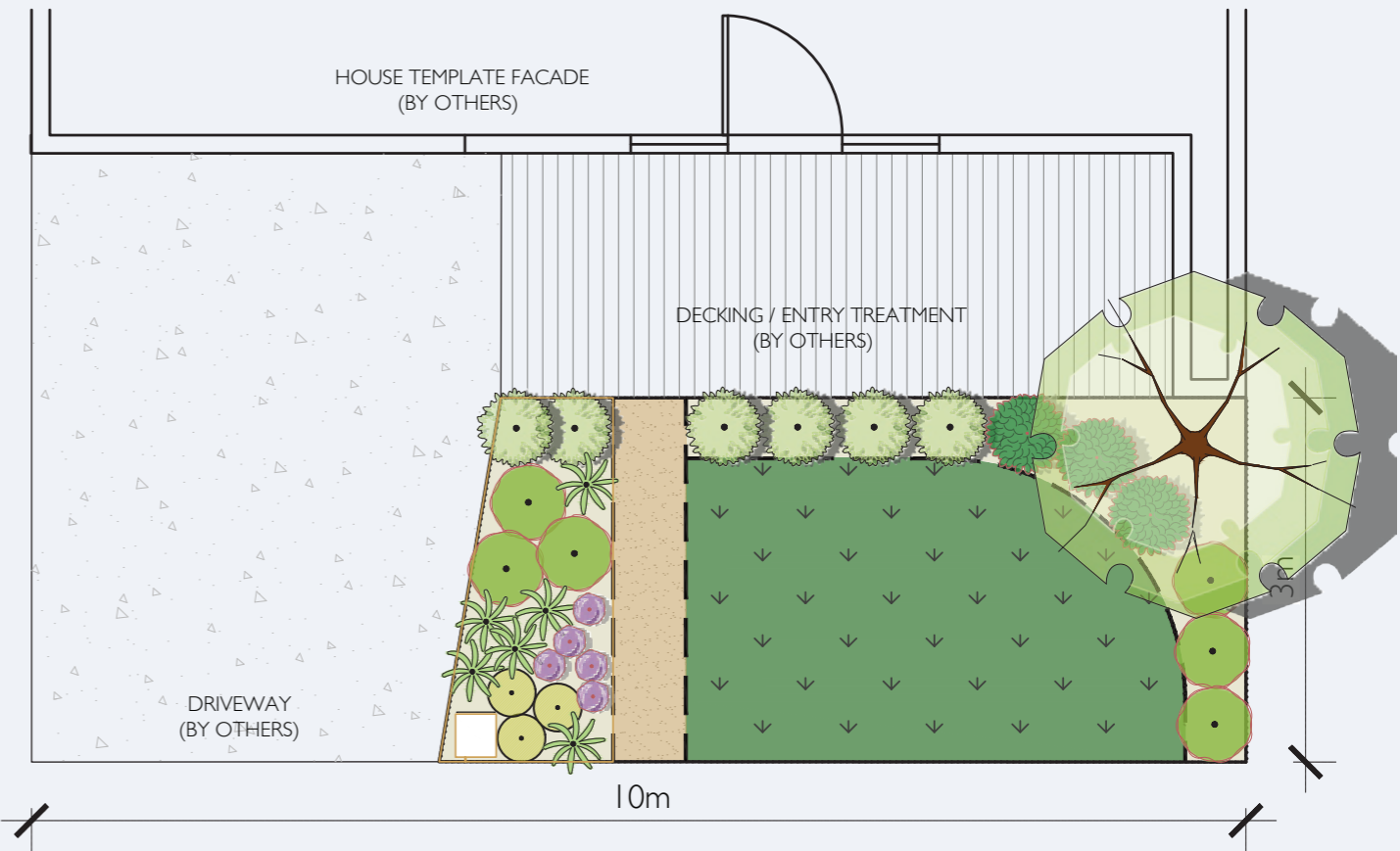
## Symbols

-  Instant turf
-  Garden Bed Area
-  Timber edging
-  Bluestone Rounds Paving



# Home Garden

With a distinctly Australian native plant pallet, the HOME garden will suit those that prefer to keep things nice and easy. Native grasses, kangaroo paw, and Eucalyptus are the cornerstone of this fresh design that will suit any new home while providing street appeal in spades. Another great maintenance friendly option, ideal for those with life on the go!



## Plants


- Eucalyptus robusta 'Matong'
- Hydrangea quercifolia 'Munckin'
- Casuarina 'Green Wave'
- Anigozanthos 'Big Red'
- Convolvulus mauritanicus
- Dietes grandiflora
- Liriope muscari

## Symbols

- Instant turf
- Garden Bed Area
- Granitic Sand
- Timber edging


# Winterfield.

## Get in touch with us

 1300 857 646

 [sales@winterfield.com.au](mailto:sales@winterfield.com.au)

## Visit our Sales Suite

 We're open:

Saturday to Wednesday

11am - 5pm

351 Greenhalghs Rd, Winter Valley

Developed by

**Goldfields**

 **CORE Projects**

Disclaimer: Plans, illustrations and images are depictions for presentation purposes and are indicative only and believed to be correct at the time of printing. Plant species are subject to change and are dependent on seasonal availability. This document should not be relied upon by purchasers, as no warranty or representation is given or to be construed. Areas and dimensions are subject to survey and proposed facilities are subject to regulatory approval and change without notice. This does not form part of any contract and purchasers should review the contract carefully, make their own inquiries and obtain independent advice before proceeding.