

Winterfield.

HOUSE & LAND

SIMONDS
BUILDING HOMES SINCE 1949



Fixed Price

\$390,576*

Lot 727

Block size: 501.28M²

 3  2  2

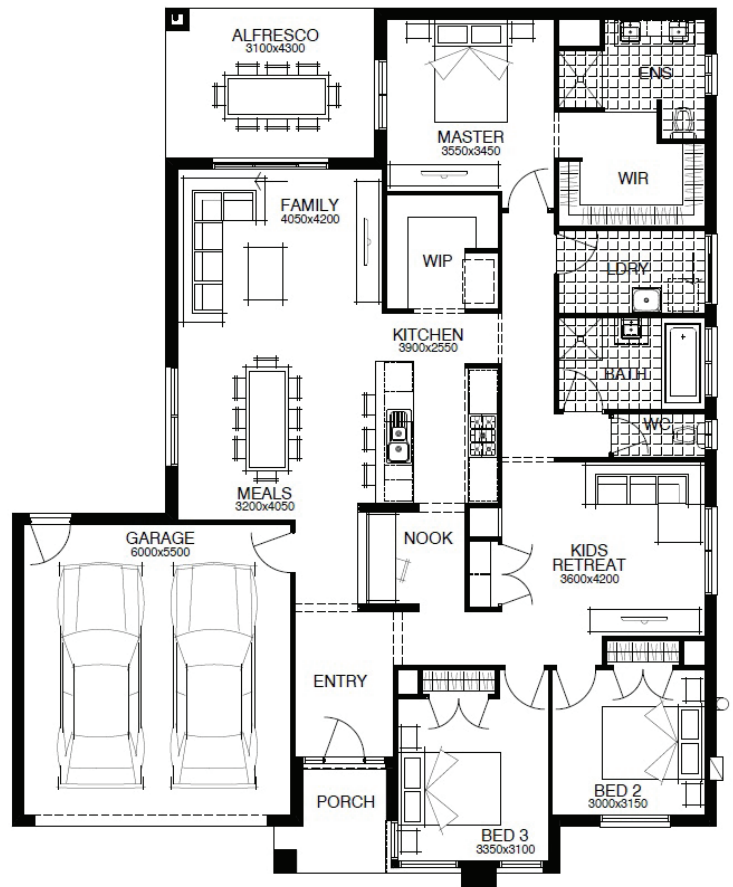
FLOOR PLAN: INNES 23_218

FACADE: MAWSON

First home owners price \$370,576

Select \$20k of upgrades.

- Wellness - darwin essentials pack
- Developer & council reqs
- Part A & B termite protection
- 3 Coat paint application
- 450Mm eaves to facade
- Sectional lift garage door
- 900Mm stainless steel appliances
- Tiled shower bases
- FREE front garden landscaping



Katie Hewitt - Hockingstuart
0400 910 102

Winterfield.com.au

Developed by
Goldfields