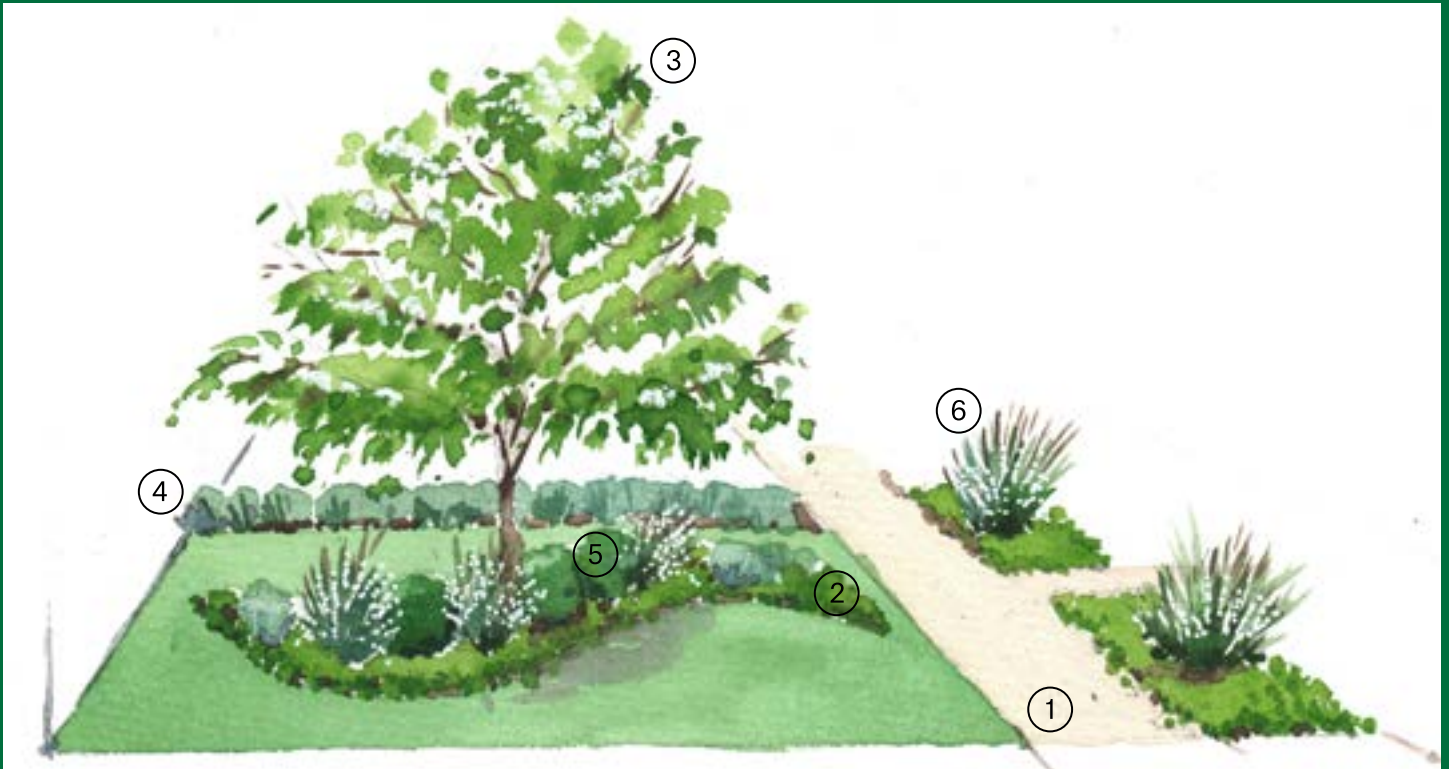


Winterfield.

Select Your
Front Garden

Winterfield Front Gardens



June Snow

June Snow presents a tranquil garden setting that will complement any modern, contemporary or traditional new home design.

This design includes a unique, central garden bed design with a gorgeous flowering tree as its centrepiece. Beneath the tree, boxwood spheres along with layers of medium shrubs and groundcovers add substance to the underplanting.

Designed to ensure the hero of your garden is the variety of plants – the June Snow garden sits elegantly on a square lawn edged by shrubbery and enhanced by natural path materials.



①

Tuscan Topping



②

Dichondra repens 'Dichondra'



③

Cornus controversa 'June Snow' 'Giant Dogwood'



④

Festuca glauca 'Blue Fescue'



⑤

Buxus sempervirens ball 'American Boxwood'



⑥

Gaura lindheimeri 'White Gaura'



Pyrus

The Pyrus garden by Fleming's is lush and rich in appeal. Breaking the stereotype for small urban gardens Pyrus frees itself of formal lines and symmetry by encouraging a flowing and natural environment.

Two ornamental garden trees look over a circular lawn ensconced by a pallet of purple foliaged shrubs.

To create contrast, delicate white lilies and silver foliage plants surround bluestone pavers that vary in shape.



1

Phormium tenax
'Purple New Zealand Flax'



2

Blue Stone
Stepping
Stones



3

Loropetalum
chinense
rubrum
'Purple Leaf
Fringe Flower'



4

Pyrus
calleryana
'Capital
Gallery Pear'



5

Anthropodium
cirratum
'White Knight'
'Star Lily'



6

Dichondra
argentea
'Silver Falls
Dichondra'

Winterfield Front Gardens



Lavandula

Beautifully crafted to ensure the garden flourishes no matter the season, there are so many elements in the Lavandula garden design to fall in love with.

A crepe myrtle tree is the ideal feature tree – its romantic form and seasonal appeal with stunning summer flowers, gorgeous autumn tones balanced with striking smooth exfoliating bark in the winter will set your heart aflutter.

In the springtime, scented plants will make the heart sing and are sure to bring birds and bees aplenty. The diamond lawn centrepiece surrounded by signature white pebbles will dress any home facade to its greatest potential.



①

White Ice
Pebbles



②

Loropetalum
chinense
rubrum
'Purple Leaf
Fringe Flower'



③

Lagerstroemia
indica x faurei
'Tuscarora
Crepe Myrtle'



④

Lavandula
angustifolia
'Dwarf English
Lavender'



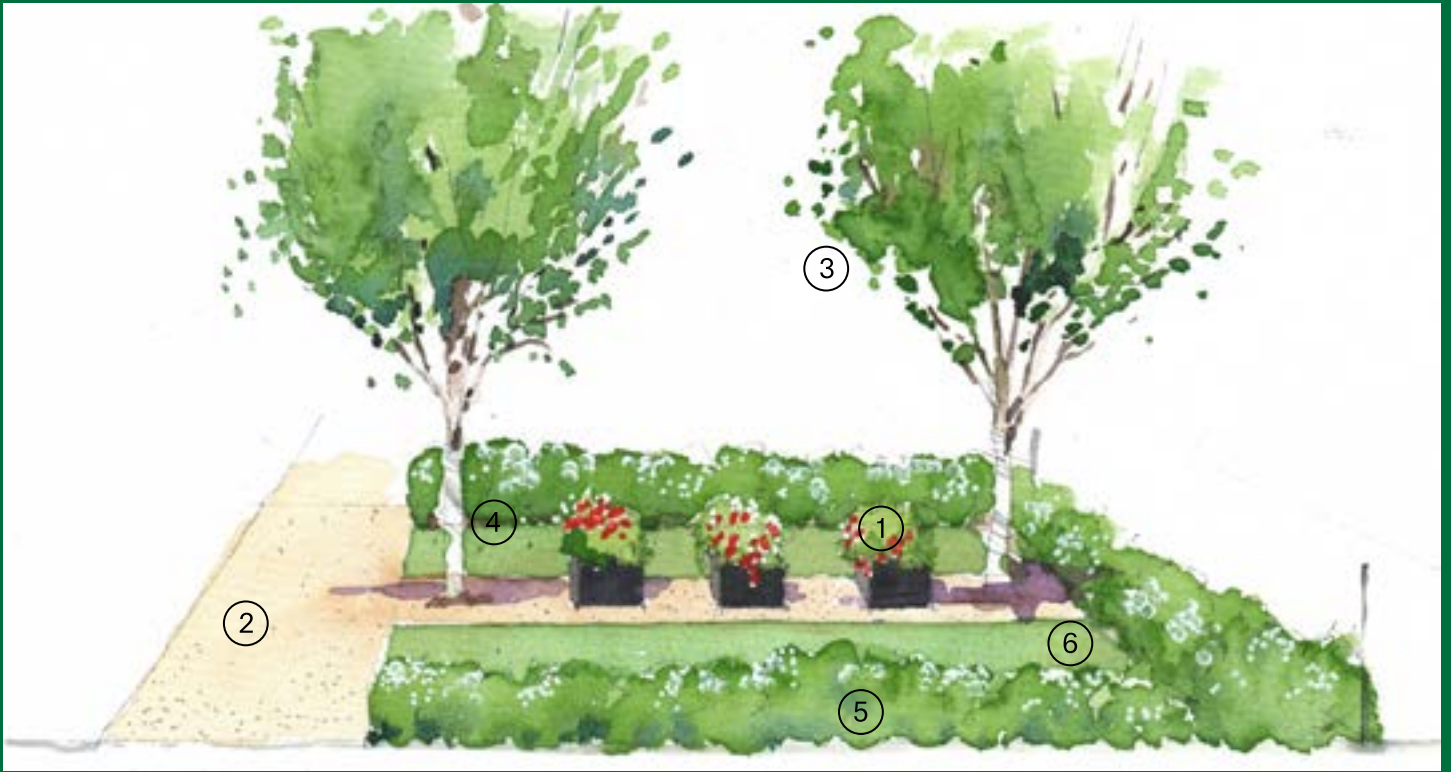
⑤

Lavandula
dentata
'White French
Lavender'



⑥

White Granite
Pavers



Betula

Simple elegance of lines and an innate symmetry are the shining component of the Betula garden design by Fleming's.

This stylish, contemporary design has been carefully executed to balance a striking home facade and features a series of three potted Azaleas flanked by two stately yet graceful birch trees.

The scene is perfectly ensconced in green with a linear lawn framed by an informal hedge of an aromatic evergreen shrub highlighted by seasonal flowers.



1

Azalea 'Scarlet Dragon'
'Red Azalea'



2

Compacted
Granitic Sand



3

Betula utilis
jacquemontii
'Whitebarked
Himalayan
Birch'



4

Garden Mulch



5

Choisya
ternata
'Mexican
Orange'



6

Sir Walter
Buffalo Turf

Winterfield Front Gardens



Abelia

A perfected symmetry is the basis of the Abelia garden with central bluestone pavers leading directly through a mirrored garden.

On either side, two feature trees with seasonal flowers will balance a lush lawn enclosed by layered hedging that adds a sense of informal structure to the design.

A classic design, the Abelia garden is perfect for those who appreciate low maintenance and have chosen a home with a central entrance.



1

Sir Walter Buffalo Turf



2

Abelia grandiflora Nana 'Dwarf Abelia'



3

Cercis chinensis 'Avondale Chinese Redbud'



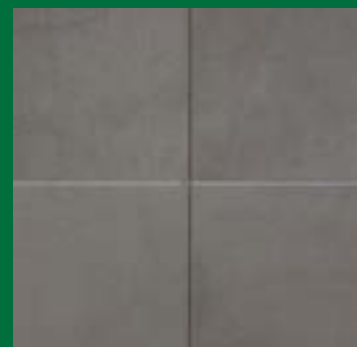
4

Garden Mulch



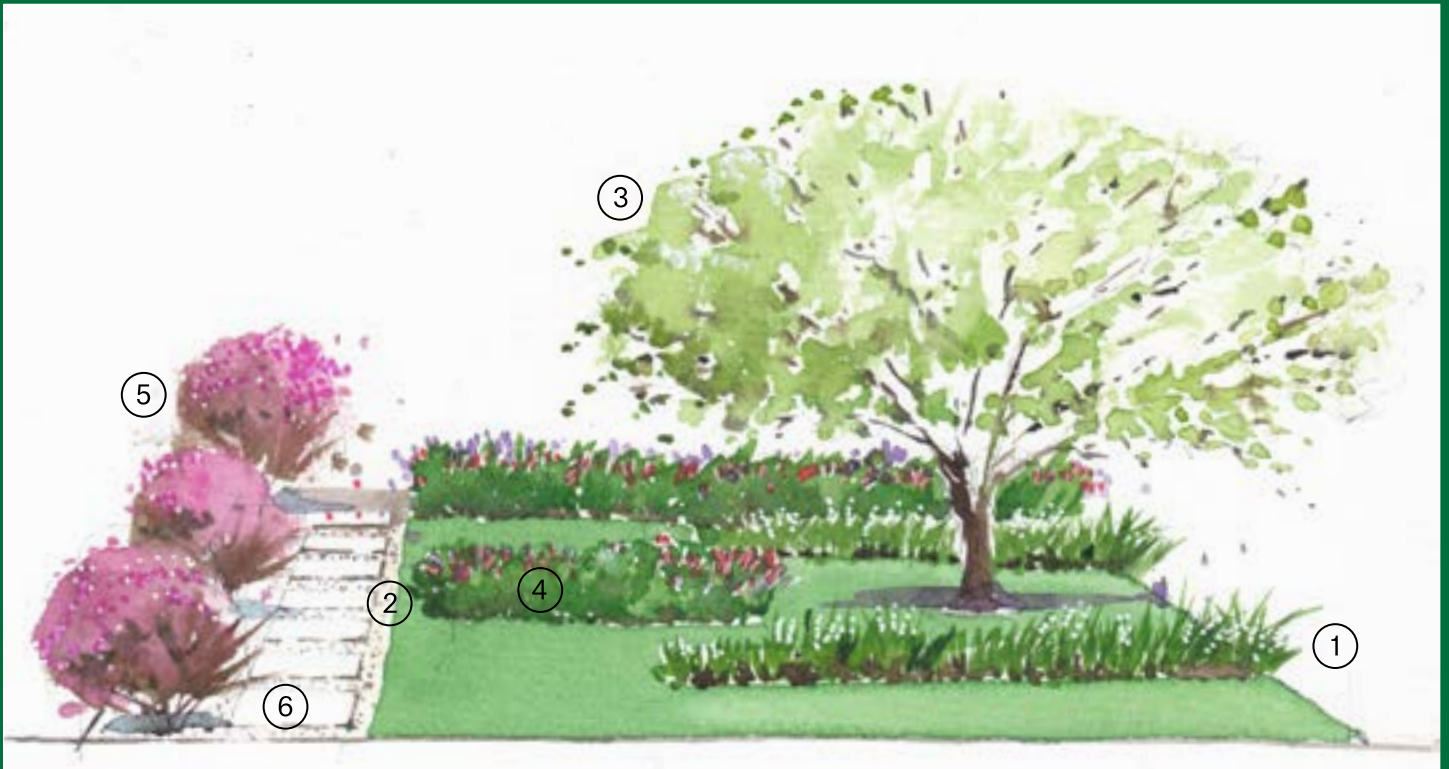
5

Scaevola albida 'Pale Fan Flower'



6

Bluestone Pavers



Wild Iris

The Wild Iris garden by Fleming's is a stately yet contemporary addition to any home. Wild Iris will suit almost any home facade but will be particularly appealing to those that appreciate a modern edge.

Horizontal garden beds feature small, but vibrant garden shrubs. Surrounding the feature tree – a beautiful Crab Apple that will offer seasonal interest and beauty when flowering.

Offset from centre, white granite pavers will be flanked by purple leaf shrubs for added contrast. With the added elegance of time-honoured plants that can stand the test of time, the Wild Iris is the perfect contemporary garden design.



1

Dietes grandiflora
'Wild Iris'



2

White Ice
Pebbles



3

Malus
'Sugar Tyme'
'Flowering
Crab Apple'



4

Hebe 'Sunset
Boulevard'
'Purple Hebe'



5

Loropetalum chinense rubrum
'Purple Leaf
Fringe Flower'



6

White Granite
Pavers

Select Your Garden

At Winterfield, you have the highly exclusive opportunity to have a home landscaped by a renowned authority on Australian landscaping.

Wes Fleming, Fleming's Director and third generation nurseryman, has designed six curated gardens for each resident to select from for their new Winterfield home.

Installation

Once you've received your COO (Certificate of Occupancy) and all builder materials have been removed from site, please follow these two easy steps to coordinate the installation of your designer front garden;

1. Contact your client representative from Fleming's to arrange your consultation: 03 9756 6105 or email: winterfieldlandscapes@flemings.com.au to arrange your consultation.
2. Your Fleming's client representative will contact you to discuss your design preference, alteration for site position and to co-ordinate the installation of your selected gardens.

Fleming's will then take care of all the necessary processes required to finalise the design, build and planting of your designer front garden.

Developed by

Goldfields

Gardens by

Fleming's

Sales by

hockingstuart

03 5329 2500

Winterfield.com.au